



Natural products for wood

Quality • Nature • Wellbeing
Wood treatments

Product catalogue

AMONN[®]
CLOE THE GOOD LIFE

2nd EDITION



Index

- 4 **Cloe: the Good Life**
- 8 **Amonn is Ethics... Cloe is Ethic Green**
- 9 **Products for wood construction**
- 14 **Products for wood flooring**
- 18 **Cleansers and maintenance products**
- 24 **Products for industrial parquets**

CLOE THE GOOD LIFE

For a healthy life, man needs the elements that nature offers, as does the world of construction and in particular the interiors of our homes.

Statistics now show that allergies and other pollution-related illnesses are steadily on the rise. For this reason, more and more consumers and designers are in search of healthy products, where possible made from natural, sustainable and renewable raw materials.

On the other hand, quality must not be compromised, so it is important to nourish timber structures and claddings with products that restore the natural qualities of the materials and produce sensations of well-being and harmony.

The most widely used basic substance in chemistry today is petroleum, from which thousands of derivatives are synthesised, available to industry for the production of different formulations. By contrast, the choice of raw materials in the field of natural paints is less than a hundred. The future needs to bring new solutions, relying on resources of a different, sustainable nature. The basic raw materials for future chemistry are available in our biosphere in an abundance of plant species and varieties and can be used to produce completely biodegradable paints.

Amonn intends to use the Cloe line to reclaim the term "natural paint", taking it to another level. This is because Cloe paints consist of more than 97% natural origin raw materials and do not contain petrochemical solvents, acrylic, vinyl and alkyd resins of petrochemical origin. Furthermore, thanks to clean technologies, Cloe products do not produce environmental damage even in disposal and are reintegrated into the vital biological cycle of the nature from which they originate.

OUR HOPE:

**live healthy
and respect nature!**

Did you know...

...the name **Cloe** (*Chloe*) has Greek origins and is also used as an epithet for Demeter, the Greek goddess of nature and crops.

Its etymology means "green", "young", "fresh" and indicates in particular newly sprouted grass.



VEGETABLE OILS

(Tung oil, coconut oil, linseed oil, sunflower oil, etc.) have the ability to protect wood from weathering while nourishing it from within.



ORANGE TERPENE

is a totally natural, multifunctional and multi-purpose solvent of vegetable origin with a pleasant orange odour that can be used to replace more aggressive solvents.



CASEINE

is a milk protein and is mainly used as an adhesive and colour fixative in the formulation of natural paints.

RAW MATERIALS

Our product formulations protect the treated surfaces with vegetable-origin resins. Staining is achieved by using mineral pigments such as iron oxides, ultramarine pigments, earth pigments and bone blacks, and excluding the use of petrochemically-synthesised organic pigments. The vegetable surfactants used for the emulsions and in cleaning products are biodegradable and phosphorus-free. The additives in turn are chosen from those with the lowest environmental impact.

Cloe products do not pollute the indoors and have a very low environmental impact even in disposal.

TRANSPARENCY

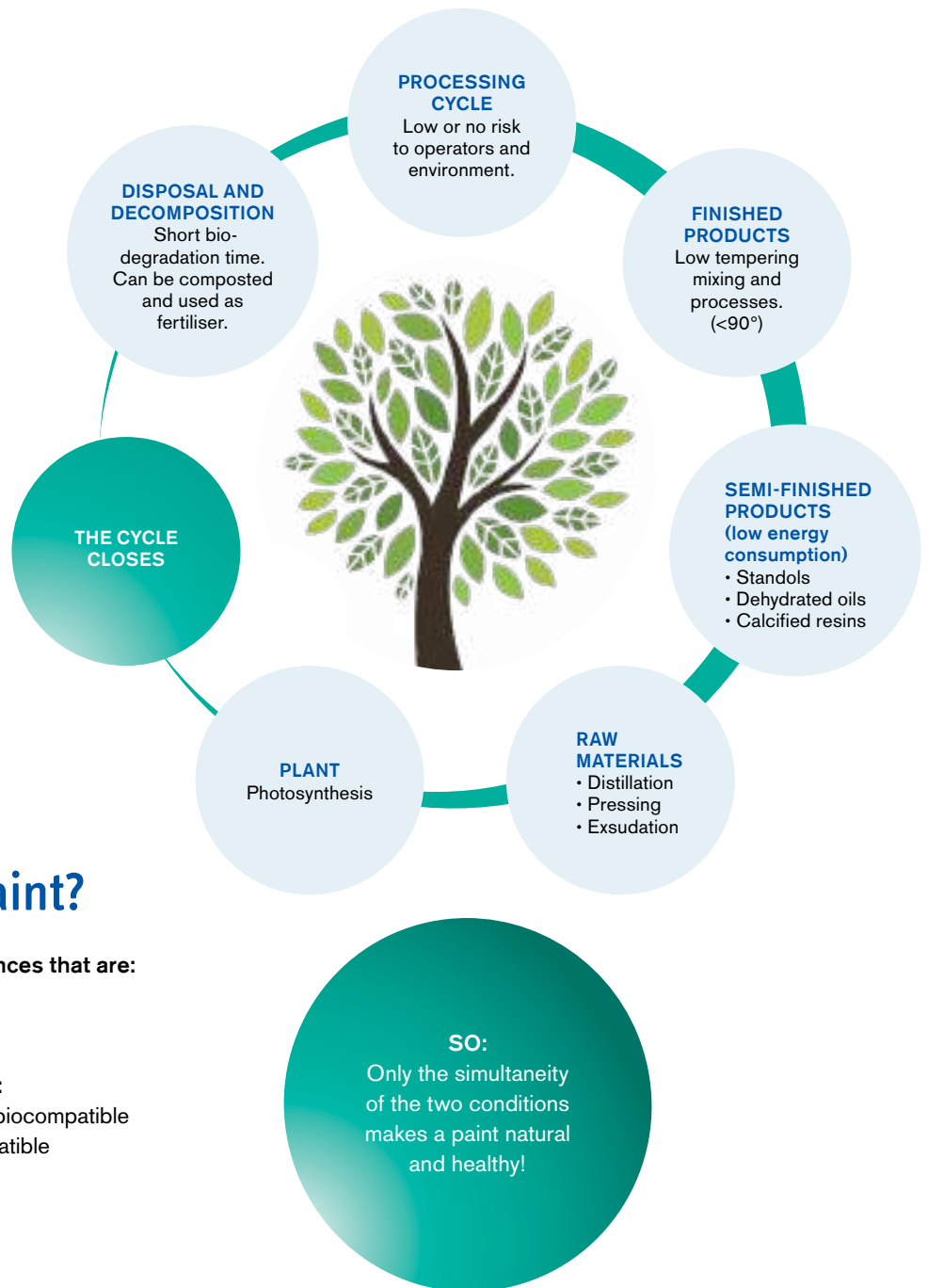
The **Cloe** line voluntarily declares all the raw materials used in order to guarantee its customers the real possibility of making a conscious choice, with the aim of protecting their own health and that of the environment.

Cloe voluntarily declares the full list of raw materials on each product label.



Plant chemistry: the closed life cycle

The life cycle of materials is the sum of all the production stages in which a material is used. The cycle can be closed or open, depending on whether or not the same material can be used several times in different production cycles.



What is natural paint?

Natural paint is composed of substances that are:

- Biocompatible
- Non-toxic and non-harmful

It must however be kept in mind that:

- A non-harmful substance may not be biocompatible
- A harmful substance may be biocompatible



Quality and safety

According to the Amonn philosophy, all products leaving the production plant respect the environment and the safety standards in force in terms of paint and wood protection. Amonn carries out all the necessary tests on its own initiative, scrupulously following European directives, to guarantee the customer complete safety and reliability in terms of effectiveness. The quality labels offered by Amonn underline the company's constant commitment to offering its customers the best solutions and services.

Our symbols



Products free of volatile organic compounds.



Products that reflect the environmental philosophy of Amonn



Products with special water-based formulation.



Products that do not contain petrochemical solvents, acrylic, vinyl and alkyd resins of petrochemical origin.

What elements make up our natural paints?

COMPONENT	FUNCTION	THE CLOE CHOICE
BINDER	Basic paint product component with an adhesion and protection function.	<ul style="list-style-type: none"> • Vegetable resins • Vegetable oils and their derivatives
SOLVENT	Liquid substance that dissolves the binder, adjusts viscosity and evaporates to leave a dry film.	<ul style="list-style-type: none"> • Water • Terpenes
PIGMENTS	Substances that provide colour and filling giving the paint a protective, decorative function.	MINERALS (high outdoor resistance) <ul style="list-style-type: none"> • Natural soils • Iron Oxides • Titanium dioxide • Other minerals
		VEGETABLE (poor outdoor resistance) <ul style="list-style-type: none"> • Indigo • Cochineal
		ANIMAL (very good outdoor resistance) <ul style="list-style-type: none"> • Animal charcoal
FILLERS	Natural minerals that give the paint a matt effect.	<ul style="list-style-type: none"> • Silica • Clay
ADDITIVES	Substances added in small quantities (<2%) that have various functions.	<ul style="list-style-type: none"> • Vegetable and animal origin surfactants: <ul style="list-style-type: none"> - Lecithin - Casein - Vegetable oil derivatives • Plant- and mineral-derived thickeners: <ul style="list-style-type: none"> - Cellulose - Xanthan gum • Mineral-derived preservatives • Plant-derived defoamers • Desiccants free of harmful heavy metals

THAT'S WHY

Cloe paints consist of more than 97% natural origin raw materials and do not contain petrochemical solvents, acrylic, vinyl and alkyd resins of petrochemical origin.



Amonn is Ethic... Cloe is Ethic Green

As a company founded 200 years ago - then and now family-run - Amonn has always placed human values, respect for people and protection of the environment at the forefront, even in the face of relentless progress.

Without giving up on offering the best the market has to offer, this "ethical" approach is aware that it must also leave the next generations a better and more livable world. The **Ethic Green** project is Amonn's way of giving concrete expression to its long-standing desire to offer particularly environmentally friendly products to all its consumers and users.

Amonn adopts all the solutions that are technologically feasible today so that its products have as little impact on the environment and on people's health as possible. The new **Cloe** line represents a decisive step in the right direction.

Find out more at:

www.ethicgreen.com



Products for wood construction

DID YOU KNOW ...

Calathea, originally from South America, is a plant belonging to the Marantaceae family. As well as being a pleasant houseplant, it has the ability to purify the air and help keep indoor environments healthy.



CLOE CALATHEA

This is a water-based impregnating wood agent with natural resins, free of added solvents and volatile organic compounds. It penetrates deeply, does not film, does not crack and highlights the wood grain with a brilliant effect. Its special formula is characterised by its excellent flow, which avoids unsightly colour streaks.



Brush



Impregnating machine



Immersion



Indoor/
outdoor use

Cloe Calathea

Water-based impregnating treatment with natural resins

Features

- Colours the wood, giving a rich velvety finish
- Does not form a film or peel off
- Excellent flow even when applied by hand
- Enhances the wood grain
- Leaves the pores of the wood open and controls the exchange of moisture between the wood and the air
- Contains active ingredients to protect the film from micro-organisms

Applications

For treatments on wood not in direct contact with the ground or water in indoor and protected outdoor environments. Suitable for application by hand as well as with impregnating machines and in particular with air/brush machines. For wood completely exposed to weathering, weather protection needs to be increased with Cloe Alicanto.

Drying time

Approx. 2 - 4 hours, depending on the type of wood.

Yield

15 – 17 m²/l, per coat depending on the wood absorption.

Total declaration of raw materials

Water, borates, vegetable resins, natural oils, glycerine, casein, silica, soya lecithin, cellulose, xanthan gum, attapulgit, ammonium hydrate, sodium hydroxide, IPBC, mineral pigments depending on the shade (coloured pigments, mineral oxides, ultramarine pigments, bone black).

FREE FROM: acrylic, polyurethane, vinyl and alkyd resins of petrochemical origin.

Total VOC (volatile organic compounds) declaration

The EU limit value for this product is 130 g/l. This product contains 0 g/l VOC.

Packaging

0,75 l - 2,5 l - 5 l - 20 l

Colours



S21
Honey



S10
Light walnut



S14
Douglas



S04
Walnut



S34
Dark walnut

Also available in "00 colourless".



DID YOU KNOW ...

The name Zephyrus is given the meaning "bringer of life". In Greek mythology, Zephyrus is the personification of the warm westerly breeze from the west that brings with it the heralding of spring.

CLOE ZEFIRO

This is a water-based, decorative and impregnating wood agent, based on natural resins and free of added solvents and volatile organic compounds. It easily penetrates wood, stains it, nourishes, protects and does not film; it then does not crack but wears evenly over time. Its special formula helps create a matt, elegant surface.

Cloe Zefiro

Uniforming water-based matt impregnating treatment with natural resins

Features

- Protects wood
- Gives an elegant matt effect
- Does not form a film or peel off
- Excellent flow even when applied by hand
- Leaves the pores of the wood open and controls the exchange of moisture between the wood and the air
- Optimises appearance with good colouring of knots
- Contains active ingredients to protect the film from micro-organisms

Applications

For treatments on wood not in direct contact with the ground or water in indoor and protected outdoor environments. Suitable for application by hand as well as with impregnating machines. For wood completely exposed to weathering, weather protection needs to be increased with Cloe Alicanto.

Drying time

Approx. 2 - 4 hours, depending on the type of wood

Yield

15 - 17 m²/l, per coat depending on the wood absorption.

Total declaration of raw materials

Water, borates, vegetable resins, natural oils, glycerine, casein, silica, soya lecithin, cellulose, xanthan gum, attapulgit, ammonium hydrate, sodium hydroxide, IPBC, mineral pigments depending on the shade (coloured pigments, mineral oxides, ultramarine pigments, titanium dioxide, kaolin, bone black).

FREE FROM: acrylic, polyurethane, vinyl and alkyd resins of petrochemical origin.

Total VOC (volatile organic compounds) declaration

The EU limit value for this product is 130 g/l. This product contains 0 g/l VOC.

Packaging

0,75 l - 2,5 l - 5 l - 20 l



Brush



Impregnating machine

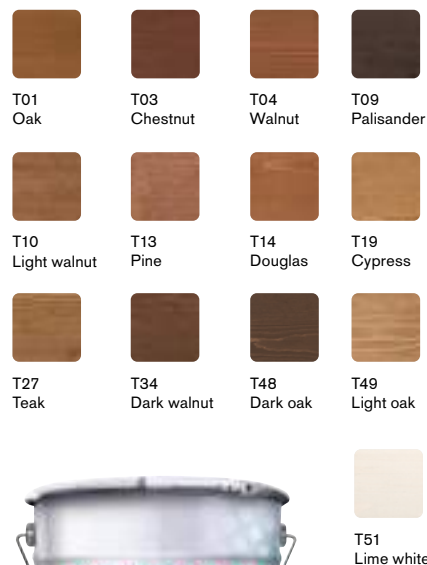


Immersion



Indoor/
outdoor use

Colours



Also available in "T60 colourless".

DID YOU KNOW...

Maranta is the name of an evergreen, decorative and purifying plant. Native to South America, in addition to its ornamental qualities, it is valued for its ability to absorb and remove various harmful substances from the air.

CLOE MARANTA

This is a water-based decorative wood impregnating agent, based on natural resins and free of added solvents and volatile organic compounds. Applied in several coats, it resists weathering and its brilliant formula creates a pleasant wax effect. It penetrates wood, does not film or crack, but wears off evenly over time.



Brush



Impregnating machine



Immersion



Indoor/
outdoor use

Cloe Maranta

Water-based glossy impregnating agent with natural resins

Features

- Protects wood
- Multiple coats give a brilliant waxed effect
- Offers good weather resistance
- Penetrates deeply, does not film or crack
- Easy to use without colour streaks
- Leaves the pores of the wood open and controls the exchange of moisture between the wood and the air
- Contains active ingredients to protect the film from micro-organisms

Applications

For treatments on wood not in direct contact with the ground or water in indoor and protected outdoor environments. Ideal for application by hand without the problem of streaks forming, it can also be applied using an impregnating machine. For wood completely exposed to weathering, weather protection needs to be increased with Cloe Alicanto.

Drying time

Approx. 2 - 4 hours, depending on the type of wood.

Yield

15 - 17 m²/l, per coat depending on the wood absorption.

Total declaration of raw materials

Water, vegetable resins, tung oil, borates, casein, soya lecithin, attapulgite, sodium hydroxide, iron desiccant and IPBC. Depending on colour: kaolin, iron oxides, bone black, titanium dioxide, aluminum magnesium silicate.

FREE FROM: acrylic, polyurethane, vinyl and alkyd resins of petrochemical origin.

Total VOC (volatile organic compounds) declaration

The EU limit value for this product is 130 g/l. This product contains 0 g/l VOC.

Packaging

0,75 l - 2,5 l - 5 l - 20 l

Also available in "S00 colourless".

* The colours antique grey and pure white are only available in the 20 litre industrial size packaging.

Colours



S21
Honey



S10
Light walnut



S03
Chestnut



S14
Douglas



S04
Walnut



S34
Dark walnut



S81
Pearl grey



S83
Quartz grey



S82
* Antique grey



S71
Light white



S91
* Pure white



DID YOU KNOW...

Alicanto was a mythological nocturnal bird, inhabitant of the deserts of Chile. It is said to feed exclusively on gold and silver, a diet that made its wings glow with splendid golden reflections.



CLOE ALICANTO

This is a breathable, nourishing and protective water-based impregnating wood top coat with natural resins, free of added solvents and volatile organic compounds. Leaves the pores of the wood open and provides long-lasting protection against weathering and UV radiation. It penetrates wood, does not film or crack, but wears off evenly over time. Available in colourless stain with three different degrees of gloss.



Cloe Alicanto

Water-based protective impregnating top coat with natural resins

Features

- Increases weathering resistance
- Excellent UV protection
- Available in the versions colourless matt, satin gloss or glossy
- Provides an elegant finish to the surface
- Penetrates wood, does not film or crack
- Leaves the pores of the wood open and controls the exchange of moisture between the wood and the air
- Contains active ingredients to protect the film from micro-organisms

Applications

For treatments on wood not in direct contact with the ground or water in indoor and outdoor environments. Ideal for increasing resistance to weathering.

Drying time

Approx. 8 - 12 hours, depending on the type of wood. (The high dry residue and vegetable oil content can give a damp feel for up to more than 24 hours depending on environmental conditions).

Yield

13 - 15 m²/l, per coat depending on the wood absorption.

Total declaration of raw materials

Water, vegetable resins, tung oil, borates, casein, soya lecithin, attapulgite, sodium hydroxide, silica, iron-based desiccant and IPBC.

FREE FROM: acrylic, polyurethane, vinyl and alkyd resins of petrochemical origin.

Total VOC (volatile organic compounds) declaration

The EU limit value for this product is 130 g/l. This product contains 0 g/l VOC.

Packaging

0,75 l - 2,5 l - 5 l - 20 l



Brush



Spray



Indoor/
outdoor use

Colours

M00 Colourless matt
S00 Colourless satin gloss
G00 Colourless glossy



Products for wood flooring



CLOE WOOD SEALER

This is a sealer based on vegetable oils and resins. Its in-depth action stains and prepares the parquet for the application of oil-wax top coats, reducing and evening.



Cloe Wood Sealer

Oil and natural resin-based sealer for parquet floors

Features

- Penetrates deeply and does not film
- Prepares the parquet for oil-wax top coats
- Reduces and evens out wood absorption
- Easy to use
- Ready to use

Applications

Suitable as a primer for indoor wooden floors.

Drying time

Approx. 8 - 12 hours, depending on the type of wood.

Yield

15 - 17 m²/l, per coat depending on the wood absorption.

Total declaration of raw materials

Orange terpene, linseed oil, tung oil, dammar gum, rosin, clays, lead-free desiccants. **FREE FROM:** acrylic, polyurethane, vinyl and alkyd resins of petrochemical origin.

Total VOC (volatile organic compounds) declaration

The EU limit value for this product is 700 g/l. This product contains < 610 g/l VOC.

Packaging

0,75 l - 5 l



Spreader/
Cloth



Brush



Spray



Indoor use

Colours

S00 colourless





CLOE HARD OIL

This is a hard wax oil based on vegetable oils and resins. Its water-repellent formula protects against stains and wear and tear and makes this oil ideal for the treatment of interior wooden floors and furniture as well as kitchen and worktops. Once dry, it gives a satin effect and enhances the tone of the wood.



Spreader/
Cloth



Brush



Spray



Indoor use

Cloe Hard Oil

Natural hard wax oil for interior wood surfaces

Features

- Water-repellent
- Protects from stains and wear
- Penetrates deeply and does not film
- Easy to use
- Leaves the pores of the wood open and controls the exchange of moisture between the wood and the air
- Ready to use

Applications

Suitable for the treatment of interior wooden floors and furniture as well as kitchen and worktops.

Drying time

Approx. 12 - 24 hours, depending on the type of wood.

Yield

25 - 30 m²/l, per coat depending on the wood.

Total declaration of raw materials

Water, borates, vegetable resins, natural oils, glycerine, casein, silica, soy lecithin, cellulose, xanthan gum, attapulgite, ammonium hydrate, sodium hydroxide, IPBC, mineral pigments depending on the shade (coloured earths, mineral oxides, ultramarine pigments, titanium dioxide, kaolin, bone black).

FREE FROM: acrylic, polyurethane, vinyl and alkyd resins of petrochemical origin.

Total VOC (volatile organic compounds) declaration

The EU limit value for this product is 700 g/l. This product contains < 610 g/l VOC.

Packaging

0,75l - 5 l

Colours

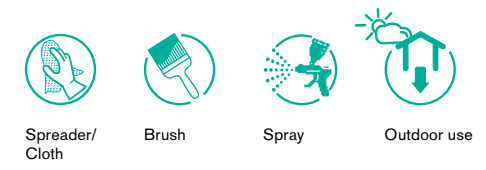
S00 colourless





CLOE WOOD & DECK

This is a water-based protective oil-wax based on natural resins, ideal for the protection and enhancement of outdoor wooden floors and furniture. It makes wood water-repellent and resistant to stains, trampling and weathering.



Cloe Wood & Deck

Water-based oil-wax for outdoor wooden floors and furniture

Features

- Penetrates deeply, does not film or crack
- Protects wood
- Easy to use
- Leaves the pores of the wood open and controls the exchange of moisture between the wood and the air
- Contains active ingredients to protect the film from micro-organisms

Applications

Suitable for the initial treatment and maintenance of wood subjected to trampling but also for wooden furniture, cladding, structures and fixtures in outdoor environments.

Drying time

Approx. 2 hours, depending on the type of wood.

Yield

10 - 12 m²/l, per coat depending on the wood.

Total declaration of raw materials

Water, vegetable resins, tung oil, borates, casein, soya lecithin, attapulgit, sodium hydroxide, carnauba wax, iron desiccant, IPBC, mineral pigments (mineral oxides, bone black).

FREE FROM: acrylic, polyurethane, vinyl and alkyd resins of petrochemical origin.

Total VOC (volatile organic compounds) declaration

The EU limit value for this product is 130 g/l. This product contains 0 g/l VOC.

Packaging

0,75 l - 5 l - 20 l

Colours

T90 Amber



Cleansers and maintenance products



CLOE WOOD SOAP

This is a liquid detergent soap based on natural substances which cleans floors even from stubborn stains without damaging the protective treatment. On wooden floors, it penetrates deeply, nourishing the surface depleted by use.



Cloe Wood Soap

Nutrient rich cleaner for oiled/waxed wood or terracotta floors

Features

- Gently cleanses
- Nourishes wood
- Cleans from stubborn stains without depleting treatments
- Penetrates deeply and nourishes the wood
- Pleasant eucalyptus scent

Applications

Ideal for deep cleaning of both oiled and waxed wooden and/or terracotta floors.

Total declaration of raw materials

Water, coconut oil soap, natural oils, glycerine, cellulose, eucalyptus essential oil.

FREE FROM: non-biodegradable surfactants, artificial fragrances.

Packaging

1 l - 5 l



Indoor use





CLOE LIQUIWAX

This is a liquid emulsion wax based on natural substances. Its self-polishing formula renews, cleanses and protects the existing treatment while waxing.



Spreader/
Cloth



Indoor use

Cloe Liquiwax

Self-polishing liquid wax for oiled/waxed wooden or terracotta floors

Features

- Self-polishing
- Renews, cleanses and protects
- Easy to use
- Leaves the pores of the wood open
- Pleasant lavender scent

Applications

Suitable for keeping wooden and/or terracotta floors oiled and waxed.

Drying time

Approx. 15 – 30 min, depending on the type of wood. Can be walked on after 1 hour.

Total declaration of raw materials

Water, gum arabic, vegetable oils, ethyl alcohol, essential lavender oil, lecithin, carnauba wax.

FREE FROM: synthetic waxes, artificial perfumes, acrylic, polyurethane, vinyl and alkyd resins of petrochemical origin.

Packaging

1 l - 5 l





CLOE WOOD OIL

This is a natural oil ideal for the special maintenance of indoor oiled and waxed wooden floors that have been greyed and depleted by treading. Cloe Wood Oil cleans stubborn stains, enhances the tone of the wood, nourishes it and regenerates its original shine and water-repellency.



Spreader/
Cloth



Indoor use

Cloe Wood Oil

Natural oil for maintenance of oiled/waxed parquet floors

Features

- Cleanses and protects wood
- Penetrates deeply and does not film
- Easy to use
- Leaves the pores of the wood open and controls the exchange of moisture between the wood and the air
- Ready to use

Applications

Suitable for the special maintenance of any wood treated with oil-wax.

Drying time

Approx. 4 - 8 hours, depending on the type of wood.

Yield

25 - 30 m²/l, per coat depending on the wood absorption.

Total declaration of raw materials

Orange terpene, natural pine, tung and linseed oils, lecithin, carnauba wax, ethyl alcohol, calcium resinate, clays, lead-free desiccants.

FREE FROM: acrylic, polyurethane, vinyl and alkyd resins of petrochemical origin.

Total VOC (volatile organic compounds) declaration

The EU limit value for this product is 700 g/l. This product contains < 610 g/l VOC.

Packaging

1 l - 5 l





CLOE CLEANER

This is an alkaline cleaning degreaser based on petroleum-free raw materials.

It vigorously removes oil-resin and synthetic paint residues.



Brush

Cloe Cleaner

Alkaline cleanser and degreaser

Features

- Cleans powerfully
- Degreases and removes oily residues

Applications

Suitable for cleaning machines, brushes and paint rollers. Can also be used as paint stripper.

Total declaration of raw materials

Water, potassium hydroxide, soy lecithin, vegetable oils, linseed oil and pine oil.

FREE FROM: acrylic, polyurethane, vinyl and alkyd resins of petrochemical origin.

Packaging

5 l - 20 l





CLOE THINNER

This is a natural solvent/thinner based on substances extracted from citrus peels and is ideal for diluting oil-resin paints but also for cleaning tools and as a solvent for greases, oils, waxes and resins.



Cloe Thinner

Plant-based thinner with orange terpenes

Features

- Natural thinner
- Solvent for greases, oils, waxes, resins and oil-resin paints
- Suitable for washing and degreasing surfaces to be painted
- Suitable for removing stains and cleaning surfaces such as glass, tiles, Formica tops etc.
- Excellent for "fine arts"
- Also replaces white spirit and turpentine for conventional products

Applications

Suitable for diluting oil-resin paints but also for cleaning tools.

Total declaration of raw materials

Orange terpenes.
FREE FROM: solvents of petrochemical origin.

Packaging

1 l - 5 l - 20 l



Products for industrial parquets



CLOE PRIMER

A waterborne wood primer based on vegetable oils and resins. Its in-depth action stains and prepares the parquet for subsequent treatment with hard oil, reducing and evening out the wood absorption. Matt once dry.



Cloe Primer

Coloured primer for wooden floors

Features

- Prepares and stains the parquet for subsequent treatment with hard oil
- Product for industrial use
- Penetrates deeply and does not film
- Reduces and evens out wood absorption
- Ready to use

Applications

Suitable for industrial use as a staining primer for indoor wooden floors.

Drying time

Approx. 4 hours, depending on the type of wood.

Yield

15 m²/l, per coat depending on the wood.

Total declaration of raw materials

Water, vegetable resins, linseed, safflower and castor oils, calcium resinate, borates, casein, soya lecithin, iron-based desiccant, xanthan gum. Depending on colour: iron oxides, bone black, titanium dioxide, nickel titanates, green chrome oxide.

FREE FROM: acrylic, polyurethane, vinyl and alkyd resins of petrochemical origin.

Total VOC (volatile organic compounds) declaration

The EU limit value for this product is 130 g/l. This product contains 0 g/l VOC.

Packaging

20 l



Brush



Spray



Roller



Impregnating machine



Indoor use

Colours

U21 colourless, T51 lime white, U10 Black, U00 oxide green, U01 oxide yellow, U02 oxide red, U11 lemon yellow, U04 grey, U06 Mahogany, U08 Chestnut, U66 light walnut, U67 walnut, U68 dark walnut.





CLOE HARD OIL EXTRA

This is a hardwax oil based on vegetable oils and resins for the industrial treatment of wooden parquet in panels or flat boards with a roller machine.

Its formulation protects the wooden surface, making it water-repellent and resistant to stains and wear. Once dry, it gives a satin effect and enhances the tone of the wood. The colourless T60 UV version reduces wood oxidation due to UV and is suitable for light-coloured or bleached wood.



Impregnating machine



Indoor use

Cloe Hard Oil Extra

Hardwax oil for the industrial treatment of parquet wood

Features

- Water-repellent
- Protects from stains and wear
- Enhances the wood
- Penetrates deeply and does not film
- For industrial use
- Ready to use

Applications

Suitable for industrial wood treatment for parquet flooring.

Drying time

Approx. 12 - 24 hours, depending on the type of wood.

Yield

25 - 30 m²/l, per coat depending on the wood absorption.

Total declaration of raw materials

Orange terpene, natural pine, tung and linseed oils, calcium and zinc resinate, carnauba wax, kaolin, soya lecithin, calcium and magnesium stearates, iron desiccant and lead-free desiccants. In the colourless UV T60 version: titanium dioxide.

FREE FROM: acrylic, polyurethane, vinyl and alkyd resins of petrochemical origin.

Total VOC (volatile organic compounds) declaration

The EU limit value for this product is 700 g/l. This product contains < 450 g/l VOC.

Packaging

20 l

Colours

- S00 colourless
- T60 colourless UV





Passion for wood.

Wood is an ancient and vital material. Amonn knows its secrets and has always been committed to protecting its health and charm in the most diverse fields of application, preserving its material and immaterial value so it can be handed down intact to future generations. Amonn is the leading brand in Italy and among the first in Europe in the wood protection sector. Its history dates back to 1802 when Johann Amonn founded the company that still bears his name and has evolved over the centuries in the name of technological innovation and passion for wood.

The development of Amonn systems starts from an in-depth knowledge of the behaviour of this material in contact with its three main enemies: fire, atmospheric agents and biological agents. Amonn develops effective and reliable protective systems for each of these, the result of centuries of experience and a genuine passion for the unique qualities of this natural material. But that's not all: the quality of Amonn products can also be found in the aesthetic enhancement of wood, in the constant search for products that offer living comfort and that are sustainable in their life cycle.



Color Division | Cloe Line

Sales office: via Cima i Prà 7, 32014 · Ponte nelle Alpi (BL)
Tel. +39 0437 98411 · Fax +39 0437 99 02 71 · info@amonncolor.com · www.amonncolor.com

Legal & administrative head office: J. F. Amonn srl · Via Altmann 12 - 39100 Bolzano
info@amonn1802.com · www.amonn1802.com